

**DEKALB PUBLIC LIBRARY  
309 Oak Street, DeKalb, Illinois**

February 8<sup>th</sup>, 2006

**TABLE OF CONTENTS**

Memo from Lonn Frye, FAIA

Potential Schemes for DeKalb Public Library

Scheme 1 Drawing

Scheme 2 Drawing

Scheme 3 Drawing

Memo from Lonn Frye, FAIA  
Frye Gillan Molinaro Architects, Ltd

February 8, 2006

## DEKALB PUBLIC LIBRARY REORGANIZATION

- A library is meant to be books and more, including quiet areas for reading, social areas for meeting friends, and places to discover new ideas, music, art etc.
- The current layout of the library has little room for quiet, for social interaction, for discovery.
- Being on two levels, with no elevator to connect the floors nor a generous stairway to encourage vertical circulation, the library functions as two libraries: one for adults and one for children. There is even a separate entry door for each library. How can this work for a young mother with a child or two in a stroller when she wants to look at materials for her children *and for herself?*
- Currently both of the libraries are extremely crowded, with shelving that does not provide the aisle widths to meet Americans with Disabilities requirements.

All of the shelving is completely filled, including the hard-to-access top and bottom shelves. Even more books are stacked on top of the lower shelving units. The collection has become very inconvenient to browse.

- One of the solutions that we have been exploring is rearranging the collection, and in the process, rediscovering some of the architectural majesty to the main reading room. This has proven to be somewhat successful, but at the expense of the few existing areas reserved for seating. We have worked with the staff and made presentations to the library board. We know there are better solutions.
- To achieve a better solution we must make some serious decisions. Does the library want to be a warehouse for a very large collection, which is accessed by the public in much in the same way that as a Blockbuster? In other words, the patron comes to the library, finds materials, and leaves. Or do we want a library that is a social center; more on the order of a Barnes and Noble? A library which provides generous seating areas and encourages the patron to sit down and stay awhile.
- We cannot make that decision for you. Someone needs to seriously look at the collection and identify materials that haven't circulated frequently. By weeding the collection, will we be better able to offer a popular collection and not necessarily be viewed as a depository for years of materials? In many libraries weeding is not a popular concept. We may be hesitant to weed *our* collections and the collections of generations of *librarians before us*. But, with fewer materials, there will be more room for comfortable chairs and a series of spaces to attract the patron.
- Another solution that we are proposing is the addition of self-check stations, which will simplify the functions at the circulation desks. We also suggest that all "holds" be shelved *for public access*. The goal here is not to reduce staffing, but rather to better utilize the staff for more

storytelling and other professional tasks that are now marginalized by the inefficiencies of an overcrowded library. Patrons either require more staff help in an overcrowded or they may simply give up and not use the library.

- We would like to discuss these options with the board and the staff.

## Potential Schemes for the DEKALB PUBLIC LIBRARY:

### Scheme 1

19,020 SF Existing

This scheme is the one that we have just completed and addresses our current contract scope. It leaves the current collection largely intact, but is arranged to better conform with the Americans with Disabilities Act. The original stacks behind the circulation desk were not addressed, as their spacing is part of the building structure. This scheme has been achieved at the expense of patron seating and tables. The Great Hall now has a more open feeling and allows the architectural features to be visible.

### Scheme 2

19,020 SF Existing

This scheme has looked at the collection and has removed various rows of shelving to allow for both new seating and tables and also delivers a more spacious feeling. The collection is now easier to browse and less labor intensive for the staff. The children's library now has staging areas for strollers and comfortable areas for parents to socialize and to read to their children. On both levels the desks have been altered and the self-check stations have been made prominent. Public "holds" have been provided on shelving for patron access.

### Scheme 3

19,020 SF Existing + 2,900 SF Winter Garden = 21,920 SF

This scheme illustrates the concept of enclosing the courtyard as a "winter garden." Topped by a translucent roof, this area would add years of life to the library by allowing much of the popular collection to be housed here along with much needed seating and open space. The remainder of the existing library could better be organized with the popular collection moved. In this scheme we would also suggest looking at the existing mechanical system to gain not only new energy-efficient equipment, but also much needed meeting room space on the lower level. Space requirements for new mechanical equipment are less than when the existing systems were installed. Also the huge "fan rooms" should be looked at for addition *free space*.

### Scheme 4

60,000 SF New Site

Proceed with the recommendations of Anders Dahlgren's program for a new library on a new site.

### Scheme 5

19,020 SF Existing + 40,980 SF Branch = 60,000 SF

Similar to scheme 4: fulfill the Dahlgren program by retaining the existing library and building a new branch library on a new site.

**Scheme 6**

**19,020 SF Existing + 2,900 SF Winter Garden + 38,080 SF Branch = 60,000 SF**

**Similar to scheme 4: fulfill the Dahlgren program by retaining the existing library, enclosing the courtyard as a "winter garden" and building a new branch library on a new site.**

# "MAXIMIZE COLLECTION" EXISTING FLOOR AREA

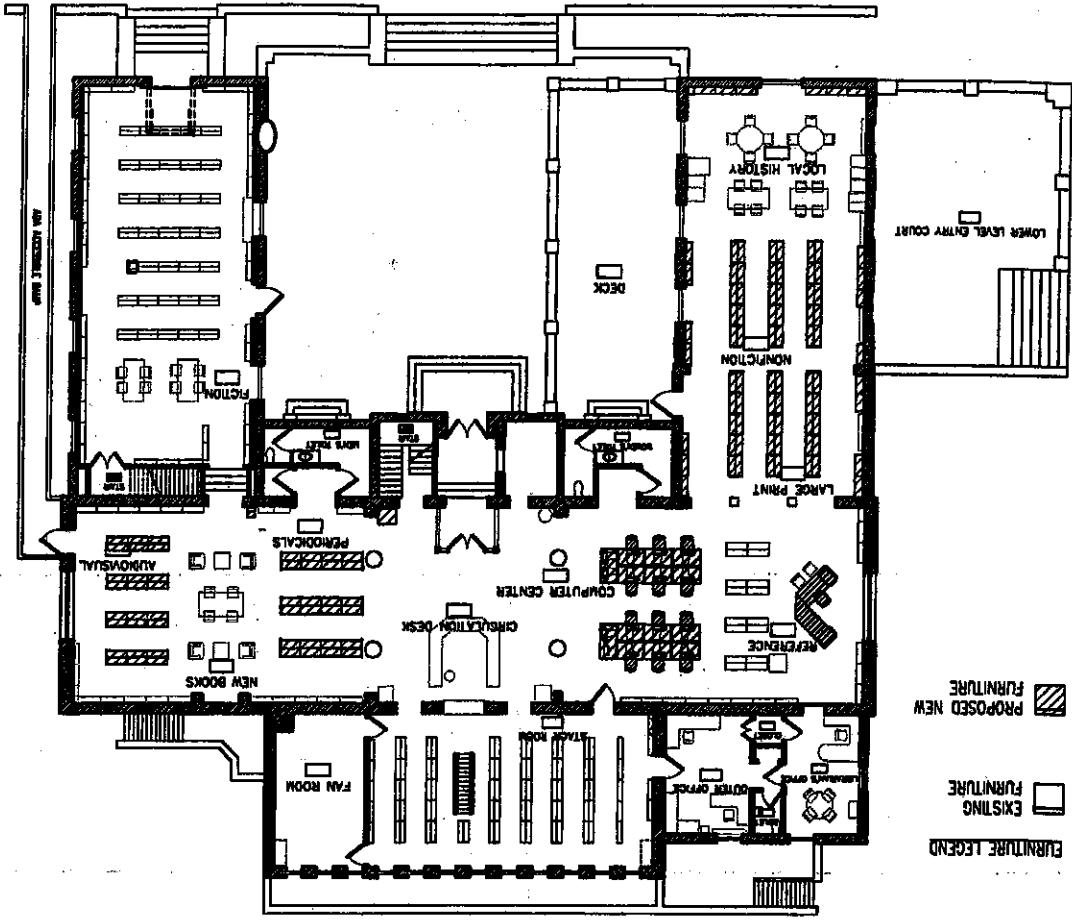
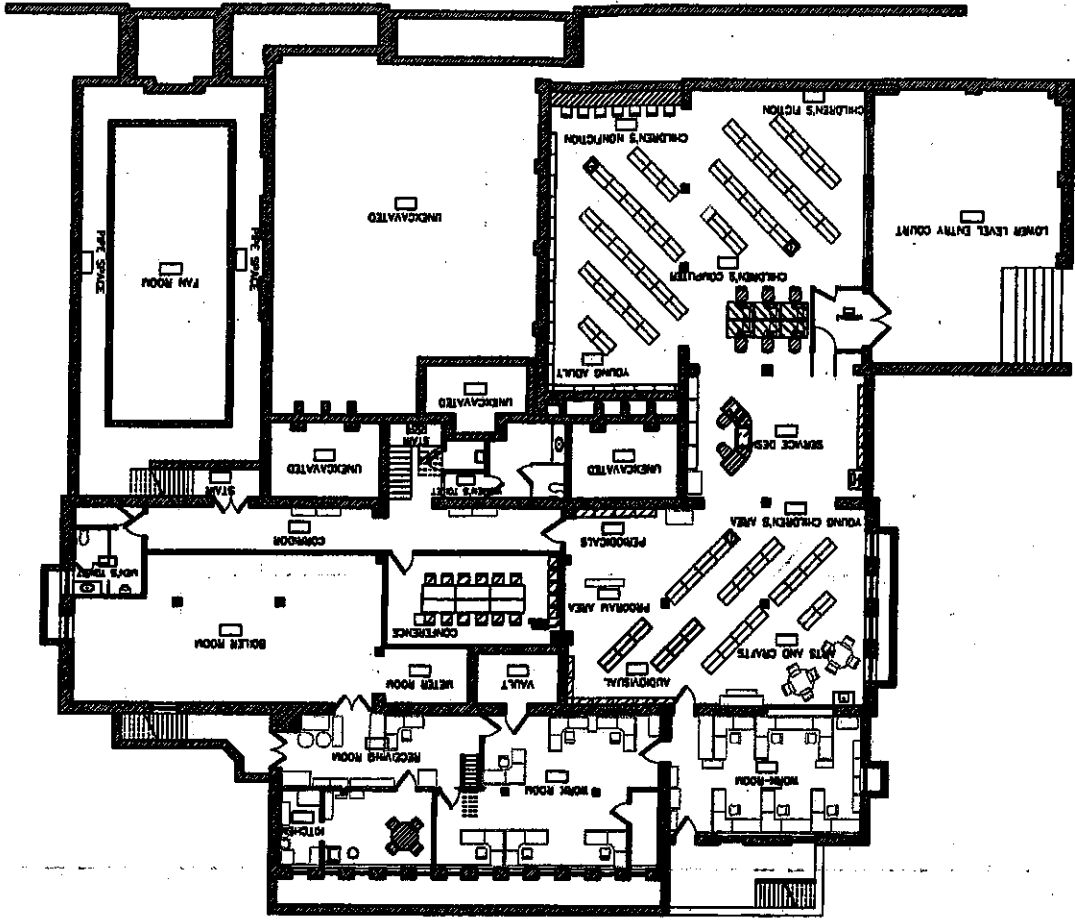
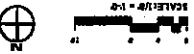




## SCHEME 1

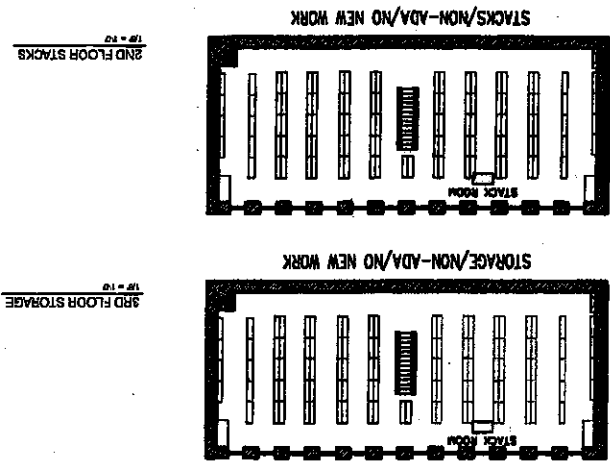
DEKALB PUBLIC LIBRARY  
Feb 8th, 2006

### SCHEME 1

19,020 SF Existing  
This scheme is the one that we have just completed and addresses our current contract scope. It leaves current collection largely intact, but it arranged to better conform with the Americans with Disabilities Act. The original stacks behind the circulation desk were not addressed, as their spacing is part of the building structure. This scheme has been achieved at the expense of pattern seating and tables. The Great Hall now has a more open feeling and allows the architectural features to be visible.



-  PROPOSED NEW FURNITURE
-  EXISTING FURNITURE
- FURNITURE LEGEND



# "MAXIMIZE SEATING + SERVICE" EXISTING FLOOR AREA

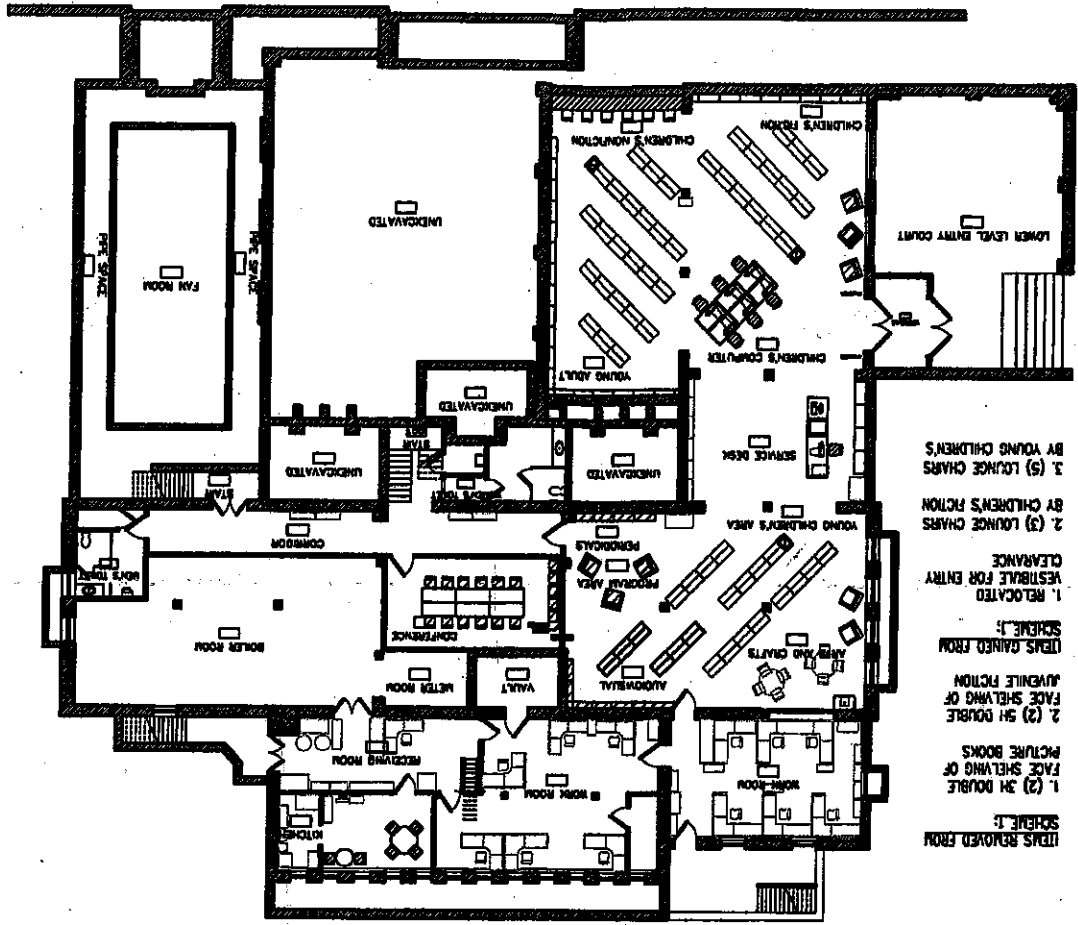
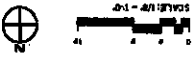


## SCHEME 2

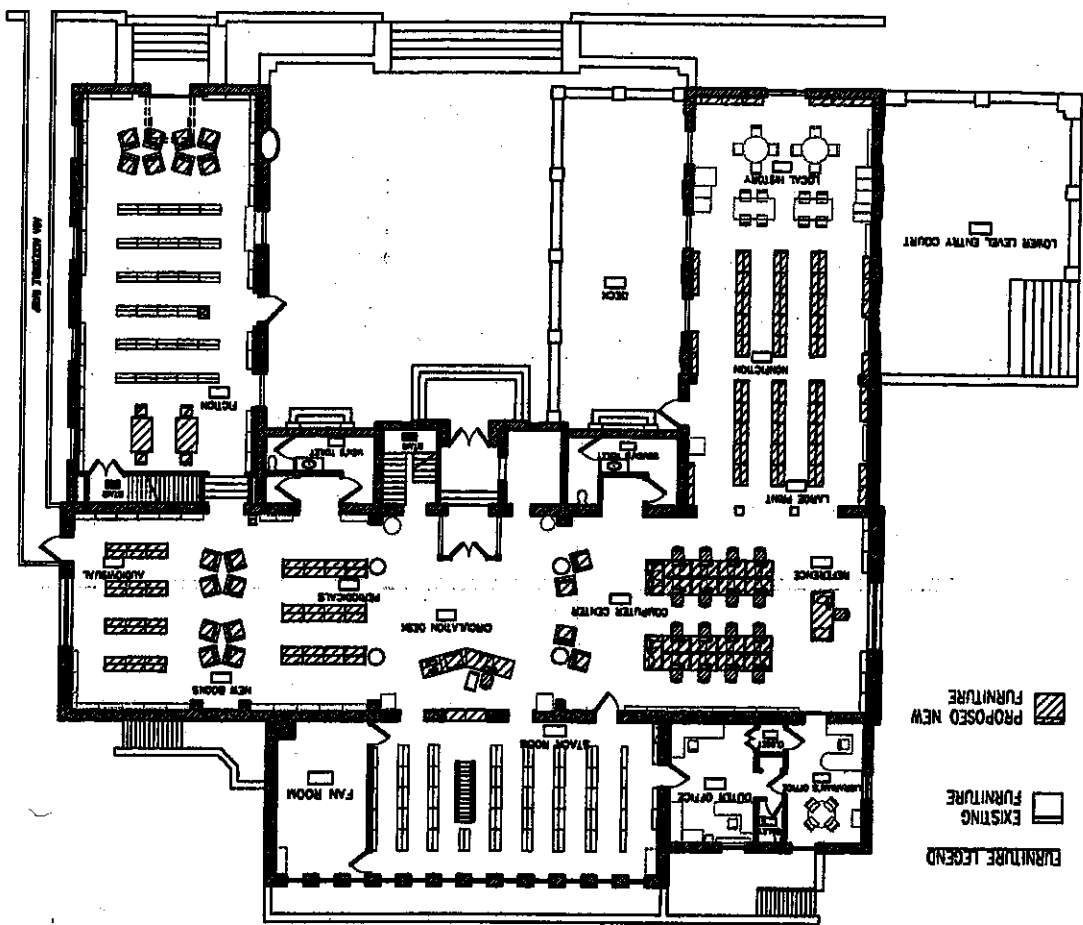
DEKALB PUBLIC LIBRARY  
Feb 04, 2006

### SCHEME 2

The scheme has looked at the collection and has removed various rows of shelving to allow for both new seating and tables and also delivers a more spacious reading area for parents to socialize and to read to their children. On both levels the desks have been altered and the self-check stations have been made prominent. Public holds have been provided on shelving for patron access.

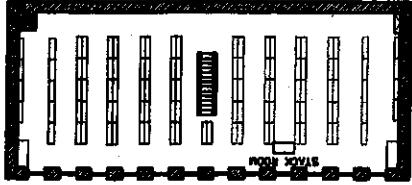


- ITEMS REMOVED FROM SCHEME 1:  
1. (2) 3H DOUBLE FACE SHELVING OF AVENUE FICTION  
2. (2) 3H DOUBLE FACE SHELVING OF AVENUE FICTION  
ITEMS GAINED FROM SCHEME 1:  
1. RELOCATED FESTIVAL FOR ENTRY CLEARANCE  
2. (3) LOUNGE CHAIRS BY CHILDREN'S FICTION  
3. (5) LOUNGE CHAIRS BY YOUNG CHILDREN'S



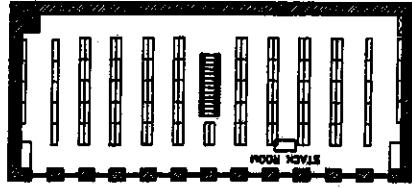
- FURNITURE LEGEND  
EXISTING FURNITURE  
PROPOSED NEW FURNITURE

- ITEMS REMOVED FROM SCHEME 1:  
1. (5) 7H DOUBLE FACE AND (5) 8H SINGLE FACE SHELVING FROM FICTION ROOM  
2. (8) 3H DOUBLE FACE SHELVING REFERENCE COLLECTION  
ITEMS GAINED FROM SCHEME 1:  
1. RELOCATED COOKBOOKS TO NONFICTION FOR HOLDS  
2. (2) ADDITIONAL COMPUTER STATIONS  
3. (8) LOUNGE CHAIRS AT FICTION ROOM  
4. (8) LOUNGE CHAIRS BY PERIODICALS  
5. (4) LOUNGE CHAIRS BY ADULT COMPUTERS



STORAGE/NON-ADA/NO NEW WORK

3RD FLOOR STORAGE

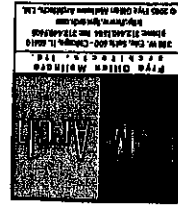


STACKS/NON-ADA/NO NEW WORK

2ND FLOOR STACKS

FIRST FLOOR

LOWER LEVEL



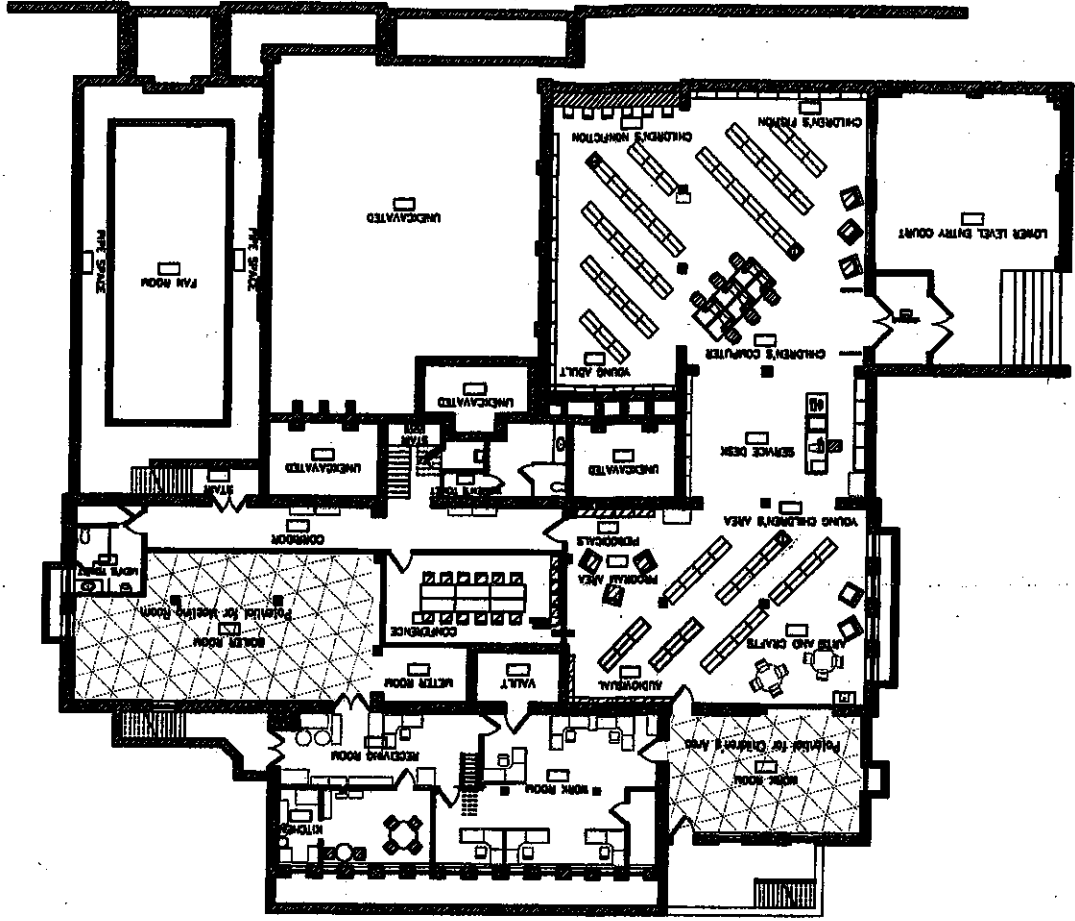
**SCHEME 3**

**"NEW ADDITIONAL FLOOR AREA"**

**DEARB PUBLIC LIBRARY** Feb 6th, 2006

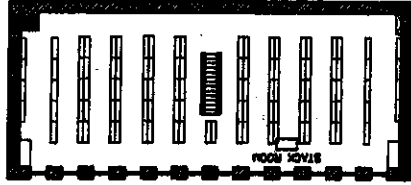
**SCHEME 3**

19,020 SF Existing + 2,900 SF Newer Garden = 21,920 SF  
 The scheme illustrates the concept of enclosing the courtyard as a "winter garden," topped by translucent roof, this area would add years of life to the library by allowing much of the popular collection to be housed here along with much needed seating and open space. The remainder of the existing library could better be organized with the popular collection moved. In this scheme we would also suggest looking at the existing mechanical system too get not only new energy-efficient equipment, but also much needed meeting room space on the lower level. Space requirements for new mechanical equipment are less than when the existing systems were installed. Also the huge "fan rooms" should be looked at for additional free space.



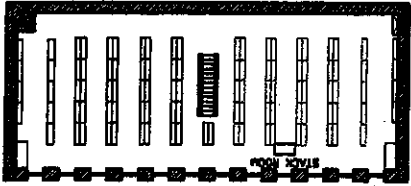
LOWER LEVEL

2ND FLOOR STACKS



STACKS/NON-ADA/NO NEW WORK  
 (Adult Collections moved to Lower Level)

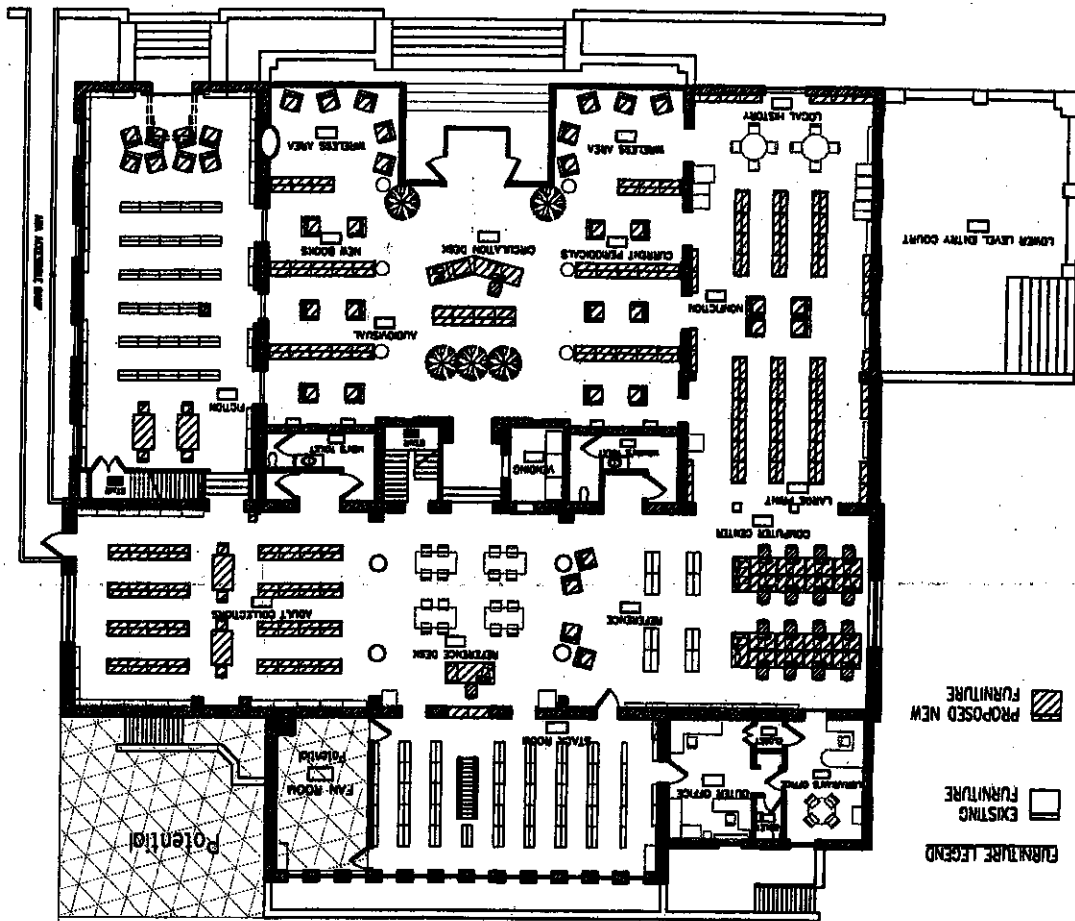
2ND FLOOR STORAGE



STORAGE/NON-ADA/NO NEW WORK

- 1. RELOCATED ADULT COLLECTIONS 000-600'S FROM SECOND FLOOR STACKS TO THE LOWER LEVEL FOR ACCESSIBILITY
- 2. MORE STUDY AND SEATING AREAS

ITEMS GAINED BY ENCLOSING THE COURTYARD:



FIRST FLOOR

- PROPOSED NEW FURNITURE
  - EXISTING FURNITURE
- FURNITURE LEGEND