

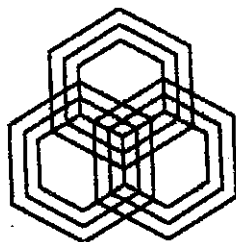
LIBRARY SPACE NEEDS

A description of optimum
service goals and space needs
and interim space use strategies
for the DeKalb Public Library

DeKalb, IL

July 9, 2002

Prepared by:
Anders C. Dahlgren



LIBRARY PLANNING ASSOCIATES, INC.
P.O. Box 44006
Madison, WI 53744

7 *SUMMARY & RECOMMENDATIONS*

This report had the following aims: to assess the space needs of the DeKalb Library based on its projected holdings and program of service, to identify long-term planning issues that emerge from those findings, and to explore shorter-term expansion and space utilization strategies.

7.1 The library's projected space needs

The DeKalb Public Library presently occupies a building that affords roughly 19,020 square feet in area. The building was built in 1930 with a donation from the Haigh family. The art deco styled building was expanded in 1978 with a wing added on the west side of the building to balance the children's wing that had long extended on the east side of the building.

There are two principal floors in the library. The entry level supports the adult collections: reference part of the nonfiction collection, fiction, and nonprint. The circulation desk faces the patron immediately upon entry. The lower level supports the children's department, staff work spaces (including technical services), and a small meeting / conference room. Immediately behind the circulation desk, in the style of buildings designed during this period, is a three-level multi-tier book stack, which houses the bulk of the nonfiction collection.

An assessment of the library's resource inventory and service goals produces an estimate of space needed to support those goals that ranges from a low of 48,736 square feet to a high of 68,935 square feet. Within that range, the consultants recommend that a figure of 60,000 square feet be used for the purposes of discussing options to support the library's long-term service and space goals.

The additional space would allow the library to expand its collections and services to respond to the demands of its constituents. According to this study, the library should provide a facility sufficient to house the following resources:

- a book collection of 200,000 volumes
- a periodical collection of 493 titles
- a nonprint collection of 20,000 items
- 60 computer network stations for public use
- 174 reader seats
- 37 staff work stations
- a library program room to seat an audience of 150
- a storytime room to seat an audience of up to 40
- a conference or board room to seat 12

As the library looks to its future, it should seek to implement a facilities expansion strategy that will support these service goals. This will allow the library to continue to display its collections in an appealing and convenient manner. It would provide adequate staff work environments, thereby maintaining the staff's effectiveness when serving the public.

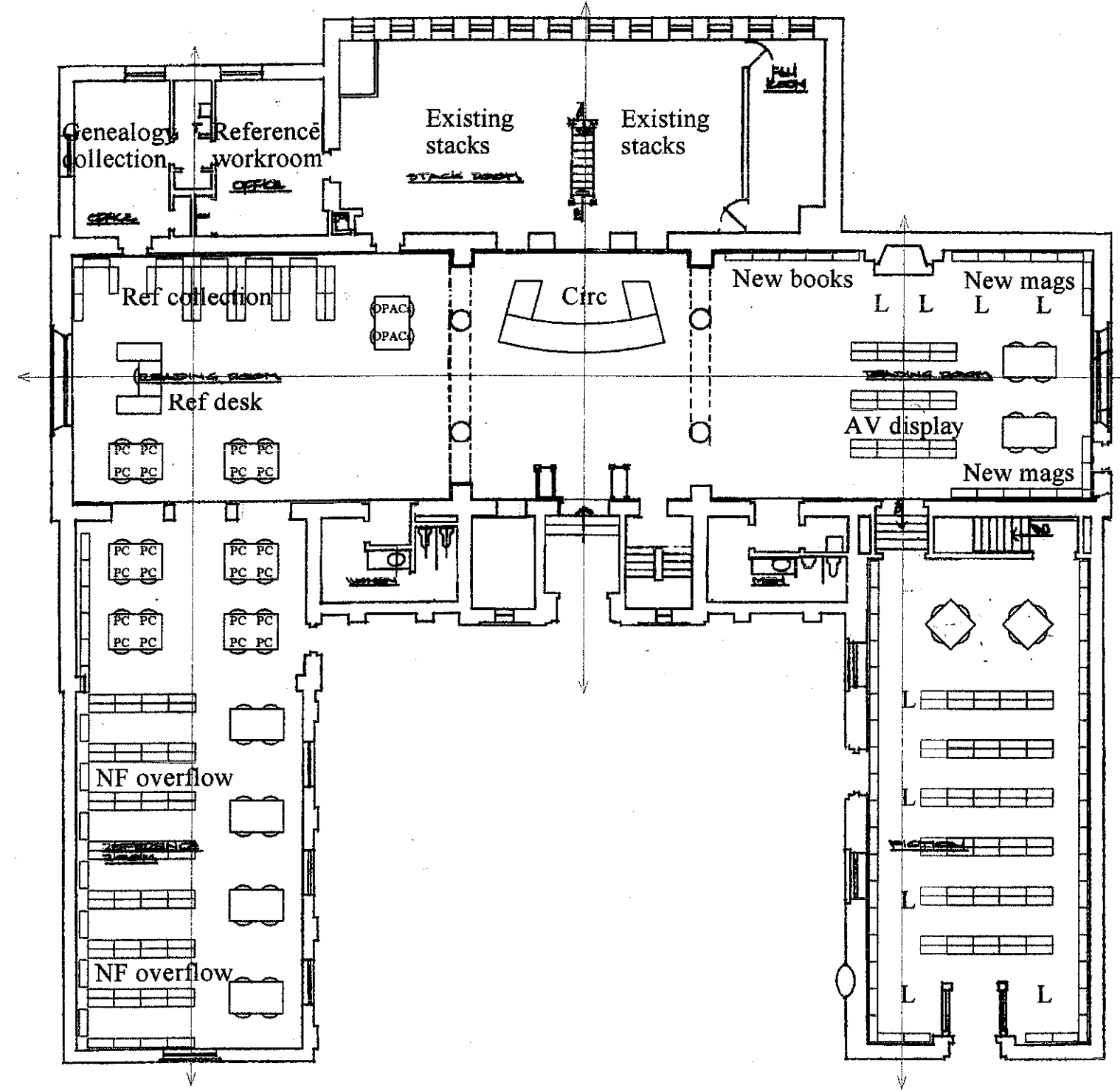
7.2. Strategic considerations affecting the library's space needs

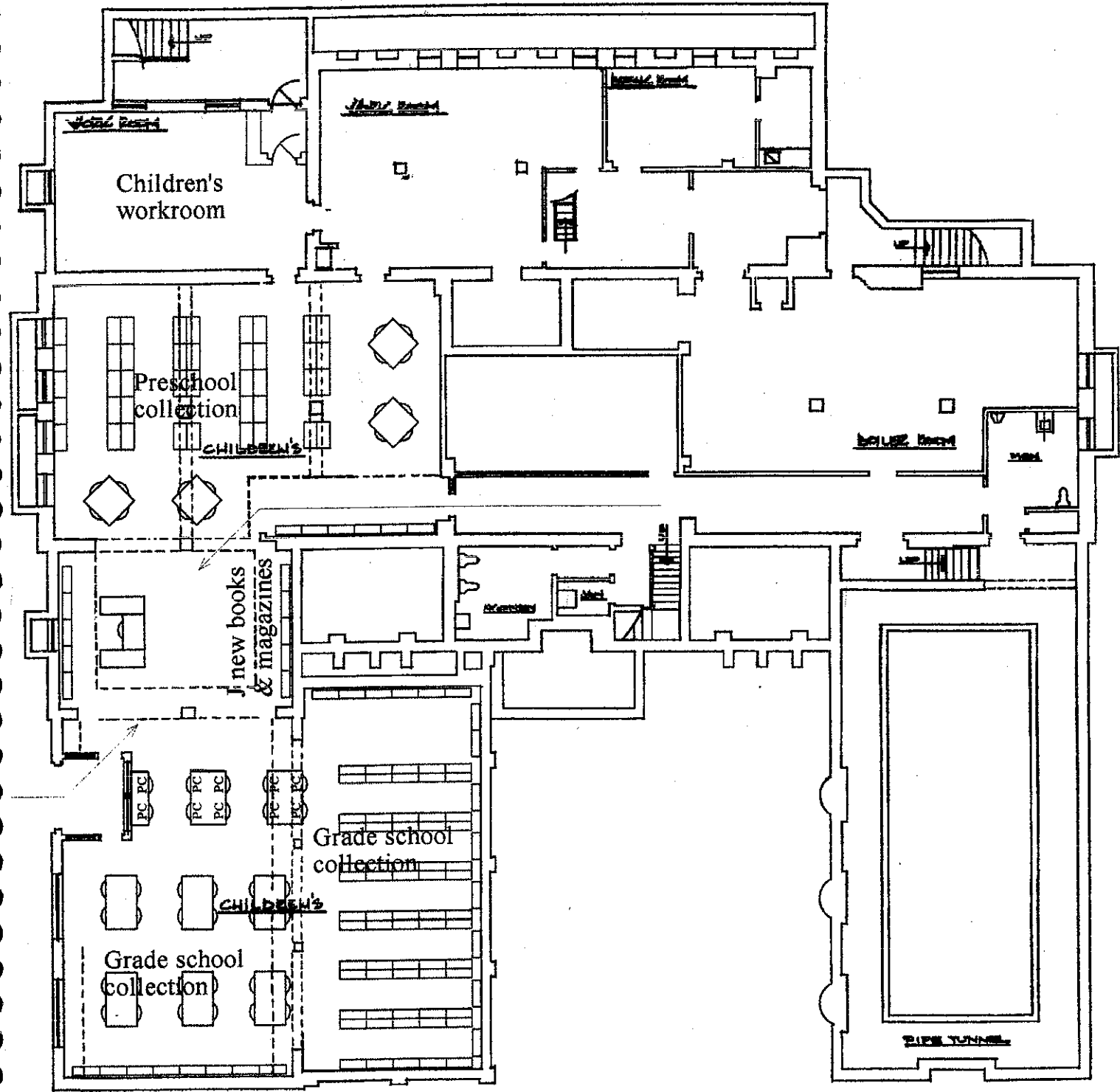
[THIS SECTION WILL BE PREPARED BASED ON DISCUSSIONS HELD DURING OUR UPCOMING VISIT]

7.3. The next steps

[THIS SECTION WILL BE PREPARED BASED ON DISCUSSIONS HELD DURING OUR UPCOMING VISIT]

Anders' Plan





LOWER LEVEL PLAN

9 July 2002



Library Planning Associates, Inc.